

Data sheet

Cabinet kitchen

Cabinet kitchen SK



The kitchen consists of:

- 4*refrigerator
- Stainless steel stove – sink unit combination, switches at the front with a basin, incl. set of drain and overflow fittings
two electric hot plates, ceramic glass cooktop or and, teapantry (without cooktop)
Stove part left or right possible
Wooden body incl. doors, shelves, drawer and light

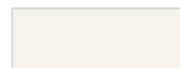
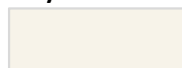
The kitchen is supplied **built**

Available colors

crystal white

Light grey

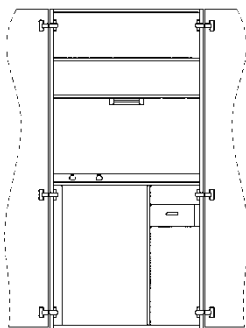
white



Weight with refrigerator:

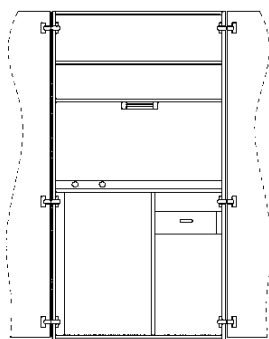
Ca. min 140 kg
Ca. max 150 kg

90 cm breit



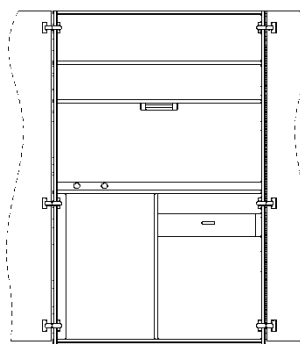
(W/H/D) 900 x 1930x 650 mm

100 cm breit



(W/H/D) 1000 x 1930x 650 mm

120 cm breit



(W/H/D) 1200 x 1930x 650 mm

Sateublatt

Cabinet kitchen



Cabinet kitchen SKC



The kitchen consists of:

- 4* refrigerator
- Stainless steel stove – sink unit combination, switches at the front with a basin, incl. set of drain and overflow fittings
- two electric hot plates, ceramic glass cooktop or and, teapantry (without cooktop)
- Stove part left or right possible
- Wooden body incl. doors, shelves, drawer and light

The kitchen is supplied **built**

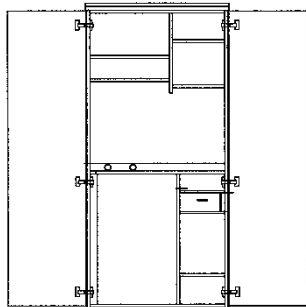
Available colors



Weight with refrigerator:

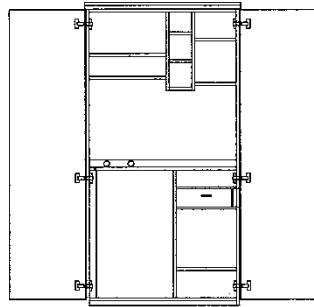
Ca. min 140 kg
Ca. max 150 kg

90 cm breit



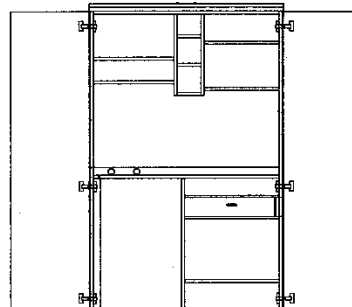
(W/H/D) 900 x 1930x 650 mm

100 cm breit



(W/H/D) 1000 x 1930x 650 mm

120 cm breit



(W/H/D) 1200 x 1930x 650 mm

Sateublatt

Cabinet kitchen



Cabinet kitchen SKK



Weight with refrigerator:

Ca. min 155 kg

The kitchen consists of:

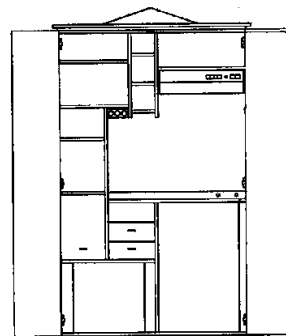
- 4* refrigerator
- Stainless steel stove – sink unit combination, switches at the front with a basin, incl. set of drain and overflow fittings
two electric hot plates, ceramic glass cooktop or and, teapantry (without cooktop)
Stove part left or right possible
Wooden body incl. doors, shelves, drawer and light

The kitchen is supplied **built**

Available colors



120 cm breit



B/H/T) 1200 x 1930x 650 mm

Electrical appliances

Hob

Electric hob

1 hotplatte	145 mm Ø 1000 W
1 hotplatte	180 mm Ø 1200 W
Plug-in	
Integrated heat protection	
Operation indicator light	
Switches at the front	
Total connected load	3,0 kW
Normal voltage	230 V / 50 Hz



Hob

Ceramic hob

hob Ø	145mm 1200 W
hob Ø	180mm 1800 W
Plug-in	
Residual heat indicator	
Integrated switch part	
Total connected load	2,9 kW
Normal voltage	230 V / 50 Hz



Kühlschrank

4* refrigerator UKS 1444 A plus plus

W/H/D	501 x 820 x 580 mm
weight:	35,9 kg
Gross capacity:	123 litres
Usful capacity:	109 litres
Freezing part:	14 litres
Defrosting	colling part automatically
Defrosting,	frezing part manually
Cooler system	cool part static
Refrigerant:	R 600 A
Appliances type classification	7
Energy efficient index:	32,9 %
Energy efficiency class:	A plus plus
Energy consumption:	138.0 kWh/year
Decibel:	40 dB
Klima class	SN-ST
Power supply:	AC 220 - 240V
Standing surfaces:	glass plate
Standing surfaces	synthetic white
Approval symbol:	TÜV-GS / VDE

